



Town of

Kwinana Profile 2007



*...Looking forward*



# Town of

## Kwinana at a Glance

Distance from Perth 35 km

Suburbs and Localities Bertram, Kwinana Beach, Naval Base, Hope Valley, Postans, Medina, Calista, Orelia, Parmelia, Leda, Wellard, Casuarina, Anketell, Mandogalup and Wandi.

Area 118 km<sup>2</sup>

Length of Roads 327 km

Number of Dwellings 10,201

Resident Population approx 25,000

Number of Businesses 608 (excluding home based)

Resident Labour Force 10,968



# Kwinana

## Mayor's Message Looking Forward



Welcome to the second issue of the Kwinana Profile, an idea that started 18 months ago has now become a much sought after document for information and advice about this wonderful area.

There is no doubt that the last 18 months has seen an incredible change in this district and the realisation of many of the projects that had been on the drawing board just a short time before.

Kwinana is on the brink of something big. Major inward investment of almost \$11.5 billion will lead to significant development over the next 15 years - development that is set to shape our growing town and create an even stronger community with a truly enviable lifestyle.

This new investment, made up of both private sector and government funding, will result in new residential, industrial and commercial developments. Unprecedented growth will see a doubling of the population, together with a substantial shift in residential diversity and housing types.

In Kwinana we currently enjoy a very strong sense of community, and a proactive and supportive business sector. The changes ahead are not designed to change our community and the lifestyle we all enjoy, but to strengthen it, ensuring that the people of Kwinana benefit as we move ahead together on this exciting journey.

Within this publication we have provided a snapshot of some of the major developments, projects, and facilities to demonstrate what an exciting and innovative place Kwinana is and will continue to be.

These include:

- New MetroRail;
- Town Centre Redevelopment;
- Eastern Residential Intensification Concept;
- Real estate developments, including the Village at Wellard;
- Community, Recreation and Cultural Services;
- Visitor highlights, including the Spectacles Wetlands and the Perth Motorplex;
- Kwinana Industrial Area;
- Fremantle Ports Outer Harbour Project; and
- The State Government's Latitude 32 Industry Zone development.

With so much planned and underway, Council has decided to put our collective future under one single banner - **Looking Forward**. This provides us with the method to communicate the huge opportunities and benefits to current and future residents and businesses. **Looking Forward** provides a focus for the exciting changes ahead.

We look forward to sharing this future with you.

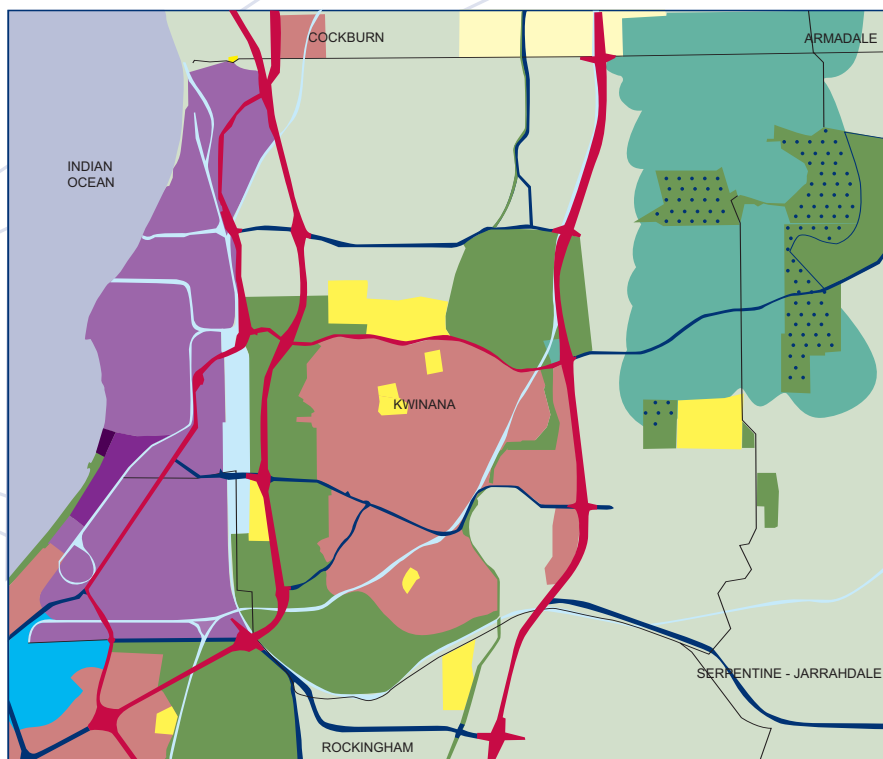
Cr Carol Adams  
Mayor of Kwinana





# Town of

## Kwinana Location maps



- URBAN
- URBAN DEFERRED
- CENTRAL CITY AREA
- INDUSTRIAL
- INDUSTRIALSPECIAL
- RURAL
- RURAL WATER PROTECTION
- PRIMARY REGIONAL ROADS
- OTHER REGIONAL ROADS
- PARKS AND RECREATION
- RAILWAYS
- PORT INSTALLATIONS
- PUBLIC PURPOSES
- WATER CATCHMENT
- LOCAL GOVERNMENT AREAS



KWINANA - PERTH - WESTERN AUSTRALIA

# Kwinana

## New MetroRail



### Southern Suburbs Railway

With two stations in Wellard and Kwinana (Thomas Road) and further stations planned as the need arises, the Town of Kwinana has been made so much more accessible and closer to Perth.

The estimated travelling time from the Kwinana Station to Perth is 23 minutes and 29 minutes from Wellard Station.

Going south to Mandurah, the estimated travelling times are 25 minutes from Kwinana Station and only 19 minutes from Wellard Station.

In peak times trains will leave at 10 minute intervals.

The New MetroRail is the biggest public infrastructure project ever undertaken in the metropolitan area and

will expand the existing railway from almost 100km by a further 81km of new track and will almost double the existing fleet of railcars.

Annual patronage is expected to grow to approximately 51 million passenger boardings.

All stations on the southern suburbs railway have been designed to provide easy access for wheelchairs and prams. This includes provision of lifts, escalators and ramps. A high priority will be the introduction of measures to ensure the safety and security of passengers.



New Wellard Station



# Town of

## Kwinana Town Centre Redevelopment

### Strategy

The Kwinana Town Centre covers an area of 100Ha in the heart of Kwinana.

For many years this area has been the home of local shopping and retail, a number of government services, local council offices and recreation facilities.

The Town of Kwinana, in partnership with private land owners, the State Government and the private sector have identified the Kwinana Town Centre for major redevelopment.

This project will incorporate a massive expansion of retail, state of the art education facilities and technical college, new office and commercial precincts plus a huge increase and wide range of residential products that collectively will change the face of the Kwinana Town Centre and provide a modern and vibrant place for this community to meet and interact.

The Town Centre is broken into four distinct precincts, all cleverly designed so that they link from north to south and east to west.

### Education Precinct

The education precinct is the site of the current Kwinana High School. The State Government is currently redeveloping this area and when complete this new education precinct will incorporate;

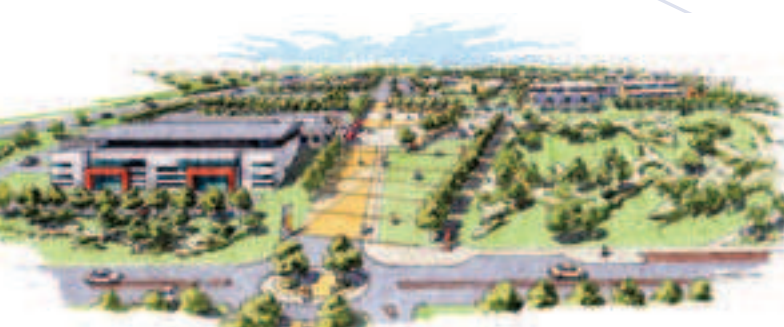
- \$45 million Gilmore College (replacing former Kwinana Senior High School)
- \$15 million Tafe Centre of Automotive Excellence
- Plus two distinct residential developments.

To the north of the site, the State Government in partnership with the Town of Kwinana is developing a district level sporting complex, incorporating three new sporting fields, a massive pavilion and clubrooms area, indoor courts and a range of support infrastructure.

This new facility has been cleverly designed to allow for use by the new Gilmore College and the existing primary school as well as being fully accessible to the community.

A number of existing and expanding local sporting clubs and organisations have already made arrangements to move to this new complex as soon as it completed in early 2009.

Gilmore College is now under construction and the first of its new students will be able to commence by the beginning of the 2008 school year.



Artists impressions of School and TAFE.



# Kwinana

## Civic Precinct

The civic precinct will see the largest amount of change and the widest range of different uses of any of the four precincts in the new Kwinana Town Centre.

To the east of the precinct, along Meares Avenue, a new quality residential townhouse development will be built right in the Town Centre, providing yet another type of housing product for the astute buyer. This new development, to be built by one of Perth's foremost property developers, will provide a wonderful opportunity for people to move right into the very centre of the Town as it continues to grow.

A key strategy in successful town centres and a way to ensure that they remain active, vibrant and exciting places to visit long after retail trading hours is to improve their night economy. The Town of Kwinana has responded to this need by announcing the development of a new licensed brasserie, restaurant and alfresco area. Replacing the former Kwinana Hotel, the new licensed facility will bring modern alfresco dining and licensed facilities right into the heart of Kwinana and provide the ideal environment from which to attract further restaurants, coffee houses, alfresco eateries and other service industries.

Nearby, commercial and office developments are already planned and discussions are well advanced with potential developers and new tenants.

Located alongside the new licensed facility will be the new Kwinana Town Square, designed to provide a focal point along the main street of Chisham Avenue and providing a relaxing place for people to meet and visit.

To the north of the new Town Square, the Town of Kwinana will shortly begin designs for its new multi-million dollar library and community resource centre. This new facility will incorporate community meeting spaces, office accommodation, a new state of the art library and knowledge centre and a variety of government and non government service providers.

Artists impressions of new office development and Tavern.





# Town of

## Kwinana Town Centre Redevelopment

### Retail Precinct

The retail precinct comprises the existing Kwinana Hub plus a range of smaller retail activities, service industries and strata units fronting onto Meares Avenue. Prompted by the acquisition of the Kwinana Hub by Mirvac in late 2005, the Council approved two significant development applications that will dramatically change the face of this shopping complex.

The first of these redevelopments will see a 250 seat alfresco-style food hall developed facing onto Gilmore Avenue. The second, a significant larger redevelopment will see a massive 50% expansion in retail floor space, the development of a new discount department store, a myriad of specialist retailers and businesses and a modernisation of the shopping centre for the future.

To the south of the precinct a new bulky goods facility is identified on the corner of Challenger and Gilmore as well as significant improvements to the Gilmore Avenue entrance to the centre and access to public transport.

Right along Chisham Avenue, the Town is planning for a new retail area, facing onto Chisham Avenue, providing a pedestrian friendly shopping experience right in the heart of Kwinana.

### Lot E26

Lot E26 is the large area directly south of the retail precinct and the Kwinana Hub shopping centre. Owned by the State Government (through the Department of Housing and Works) this property is designated for residential development and is currently project-managed by the Satterley Property Group.

It is anticipated that a structure plan for this property, indicating the style and content of the new residential development will be available for public comment by September of 2007. It is expected that this new precinct will incorporate all of the modern design methodologies of residential design including rear loaded properties, environmentally sensitive design strategies, Transport Orientated Development and the integration of significant areas of native bush and landscaped passive recreation areas.



Artists impressions of Kwinana Hub redevelopment.



# Kwinana

## Accessible and pedestrian friendly

The need to improve accessibility and create a truly pedestrian friendly place was paramount in the design of the new Kwinana Town Centre. A continuous pedestrian thoroughfare will link the entire 100Ha precinct from north to south and all developments will be required to ensure that their property 'links' appropriately with the property next door.

The heart of the Town Centre, Chisham Avenue has been designed to put the needs of pedestrians over those of vehicles. Wider footpaths, pedestrian crossing points, the significant slowing of vehicles, the development of a beautiful town square that will encourage people to just sit and enjoy the space, alfresco dining, coffee shops and new retail space that opens up to the street to encourage browsing will add up to the redevelopment, redesign and repositioning of the Kwinana Town Centre as a great place to be.





# Town of

## Eastern Residential Intensification Concept

Exciting new communities are being planned in close proximity to the Kwinana Freeway and the new MetroRail that will change the face of the Town of Kwinana forever.

The Eastern Residential Intensification Concept (ERIC) Structure Plan proposes 5 discrete new urban cells (Wellard East, Casuarina, Anketell, Wandi and Mandogalup) in addition to existing and planned development in Bertram. This will produce an additional 12,792 dwelling units and an additional population of 37,100 persons.

Council officers are currently consulting with state and private education providers, developers, urban planners and designers to ensure the proposed new communities will become quality landmark developments.

### Neighbourhoods

The Structure Plan proposes areas of increased residential densities surrounding centres and nodes and is based on the notion of walkable catchments as defined under the Western Australian Planning Commission's "Liveable Neighbourhoods" Policy. This promotes increased pedestrian, cyclist and public transport movement.

### Residential Densities

The base residential density for the Structure Plan area is proposed to be R20. Areas within walkable catchments

of proposed District Centres, Neighbourhood Centres (400 metres) and railway stations (800 metres) will be at a density of R25 and higher, this is to facilitate maximum accessibility to community facilities. Exact residential densities within the walkable catchments will be determined at the Local Structure Plan stage.

### Commercial Centres

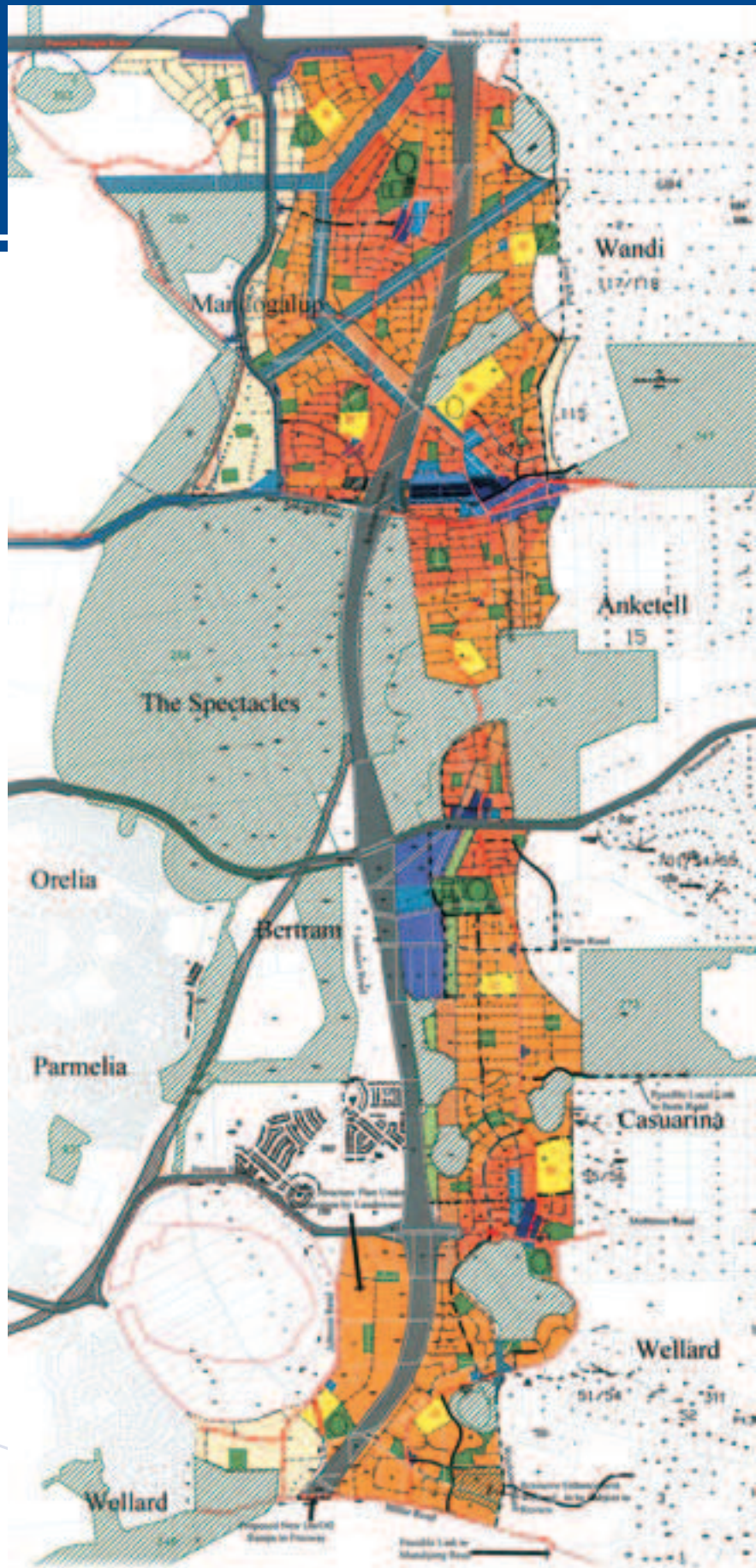
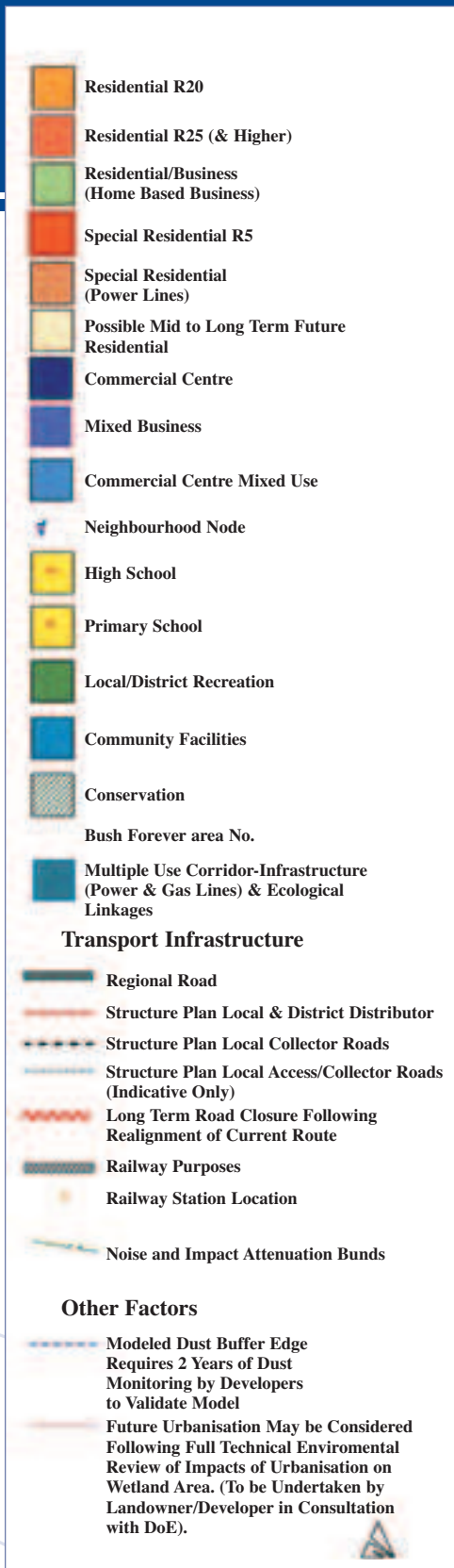
The Structure Plan reflects the location of 1 District Centre and 3 Neighbourhood Centres consistent with Council's Draft Commercial Centres Strategy currently being advertised as part of the Local Planning Strategy. The District Centre will be located on Anketell Road Wandi and Neighbourhood Centres will be located on Mortimer Road, Thomas Road and in the centre of Mandogalup.

*Further information can be obtained by viewing Council's website [www.kwinana.wa.gov.au](http://www.kwinana.wa.gov.au)*

N.B. The Draft District Structure Plan should be viewed as a guide only and should not be used as a basis for commercial decisions. It is made available without prejudice to later decisions, which may be made by Council or the State Government, which may lead to changes to the Structure Plan.



# Kwinana

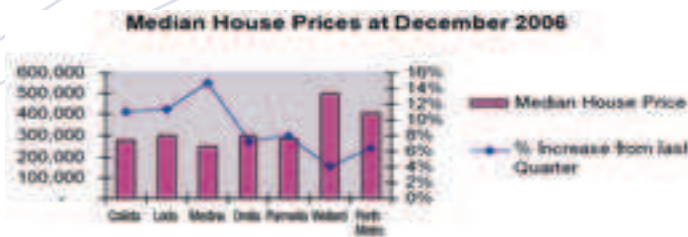


# Town of

## Real Estate

If there is one word that can be used to describe real estate in Kwinana - it is diversity.

Today the Kwinana region offers some of the best value for money properties anywhere in the Perth metropolitan area. (See graph below)



Along the eastern side of the Kwinana Freeway, Kwinana is home to beautiful lifestyle properties ranging from Wandri in the North to Casuarina and Wellard special rural in the South. Rural properties in these areas range from 2-4 hectares on average and provide both wonderful lifestyle opportunities as well as the ideal location for horse enthusiasts and nature lovers alike.

West of the Freeway, Kwinana is now home to the only truly transport orientated residential development in Perth. The Village at Wellard Estate incorporates traditional R20 home sites as well as cottage lots, all cleverly planned around a central township.

The entire development is designed so that no resident is further than 10 minutes walking distance from the new train station. From the very first stage, Wellard has proven to be one of the most popular land releases anywhere in Perth, with most releases selling in minutes to people camped on-site days prior to the launch.

Like Wellard, Bertram to the North has been very popular with buyers and has developed into a modern residential area with well planned public facilities sure to take this area to the next level.

Older suburbs in Kwinana remain some of the most affordable in Perth and with the imminent arrival of the

Perth to Mandurah rail line will no doubt prove to be a very wise investment opportunity for astute purchasers.

It is interesting to note that for the 12 months ending 31 March 2007, three suburbs were amongst the top 10 suburbs in Perth for recording the largest growth in median house prices.

- Medina - 60.97%
- Orelia - 58.6%
- Calista - 55.21%

Council is currently considering how it will manage the potential infill demand over the next few years, whilst being able to protect the wide open spaces and abundance of trees and fauna that makes Kwinana such an attractive place to live.

Kwinana certainly offers one of the widest varieties of land and housing choices of any area in Perth.



# Kwinana

## Modern Living, Traditional Values The Village at Wellard



**The Village at Wellard - a joint venture between the Department of Housing and Works and Peet Limited - will ultimately be home to more than 2700 households and is earning industry accolades for its planning, design and commitment to the environment.**

The estate aims to encourage greater use of public transport, cycling and walking as well as social cohesion, social diversity, conservation, public safety and community revitalisation.

The 320-hectare development is the first purpose-built greenfields, transit-oriented development to be built on Perth's Southern Suburbs Railway.

This master planned community is designed to be environmentally sustainable on every level - from the protection of the surrounding environment to energy and water usage in the estate's homes.

Incorporating Liveable Neighbourhood principles, the estate heralds a return to the concept of the traditional neighbourhood with the design - including landscaped spaces, pathways and the central village - encouraging people to mix with each other, improve safety and security and interact as a real community.

At the heart of the village is the Wellard Train Station, thoughtfully integrated with a bus terminal. This means the train journey from the estate to Mandurah will be just 19 minutes and the Perth CBD will be just half an hour away - bringing neighbouring employment and education opportunities, recreation and leisure facilities within easy reach.

With an active, healthy lifestyle in mind, The Village at Wellard has set aside some 33 hectares as landscaped parks. Another 17 hectares has been dedicated as a Bush Forever site and another 10 hectares reserved as conservation wetlands.

Walk trails will weave throughout the estate and entry boulevards will be lined with trees - creating the feeling of a development "on the edge of nature".

### The Village at Wellard FACT FILE

The Village at Wellard will:

- Ultimately be home to 2700 families;
- Feature 30 hectares of landscaped parks;
- Include 17 hectares of native bush;
- Have 10 hectares of wetlands;
- Boast a senior sporting oval with community pavilion;
- Have the Wellard train station and bus interchange at its heart; and
- Enjoy the convenience of a village centre with retail, commercial and community facilities.

*For further information see  
[www.thevillageatwellard.com.au](http://www.thevillageatwellard.com.au)*



# Town of

## The Spectacles Wetlands

### Visitor Attractions

The Spectacles Wetlands comprises of 360 hectares of natural bush and wetland and is the most southern of the chain of freshwater lakes on the Swan Coastal Plain, known as the Beelii Regional Park.

The Spectacles is so named because it comprises of two wetlands joined by a waterway giving it the appearance of a pair of spectacles. It is co-managed by the Department of Environment and Conservation and Alcoa of Australia.

The two walking tracks in the area consist of a 5 kilometre lake walk through Paper Bark, Flooded Gum, Bracken Fern and Tea-Tree and a 3 kilometre walk through Banksia, Sheoak and Grass Trees.

In September and October of each year the wooded areas abound with native wildflowers including Kangaroo Paws, Donkey and Spider Orchids, native Wisteria and the Kwinana emblem the Pixie Mop.



### Tours

The Spectacles Yargan Tours are a unique eco-cultural tourism venture located at the Spectacles Wetlands area. The Tours present an indigenous view of the land that includes dance, guided walks, story, song and bush tucker.

They are a forum for Aboriginal people to share their knowledge, language and history, to preserve the traditional vibrant indigenous culture.

The logo is Yargan, the Nyoongar word for Tortoise and is one of the Aboriginal totems of the Spectacles Wetlands area.

### Tours program

The Spectacles Yargan Tours offer a seasonal program that includes schools, walking day and sunset tours. Participants learn about Nyoongar language, culture, local plants and animals and the six season cycle. Tour operators and corporate enquiries are also welcome.

*Please contact The Town of Kwinana on 9439 0200 for further information - or log onto [www.spectaclestours.com.au](http://www.spectaclestours.com.au)*



# Kwinana



## The Perth Motorplex, Kwinana Beach - World Class

In the seven years since the opening of the Perth Motorplex in Kwinana Beach, the reputation of this high profile sporting venue has grown both locally as well as on a national and international front.

The venue has attracted in excess of a staggering 1.6 million spectators since the opening in December 2000 making it one of the most attended sporting venues in Western Australia and is recognised as being the most attended motor sports venue in Australia.

While the venue is primarily used for automotive based sporting events including National Drag Racing and Speedway, hosting Australian championships on a regular basis, it is also used for many other activities including driver training, national product releases and presentations. The annual Motorvation Car Show is recognised as one of Australia's greatest Street Machine and Custom Car shows attracting visitors from all over Australia.

Perth Motorplex generates social benefits by providing entertainment, recreation, education and youth opportunities within the Kwinana community.

The venue and events are family friendly with grass terraces as well as formal seating. The venue was designed as an amphitheatre concept which also

provides great access and viewing for disabled and wheel chair bound visitors.

The venue operation generates both direct and indirect employment opportunities with a significant level of staff coming from Kwinana and surrounding areas.

The race teams are also huge employment generators both within the automotive sector but also generally with the hire of marquees, catering for teams, uniforms, team merchandise etc.

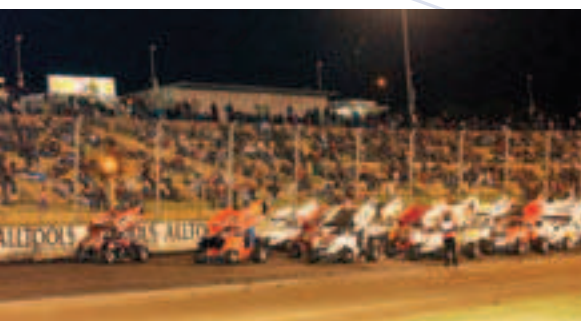
Significant tourism impacts are created by thousands of interstate and international visitors attending Australian Championship events for both Drag Racing and Speedway.

Perth Motorplex at Kwinana Beach is the only major sport stadium in the southern suburbs.

International Speedway and Drag Racing competitors coming to Perth to compete at the Perth Motorplex rate the venue as one of the best in the world with legends such as Sprint car racer Gary Rush stating that the Perth Motorplex, Kwinana Beach is the best Speedway in the world.

International media regularly cover events at the Perth Motorplex, including countries as diverse as Japan, Malaysia, Germany, Spain and the UK along with both North and South America.

*For further information please visit website [www.motorplex.com.au](http://www.motorplex.com.au)*



# Town of



## Community, Recreation & Culture Services

As Kwinana's population expands it is important to the Town of Kwinana and its residents that the sense of community is retained.

The Town of Kwinana aims to provide a range of cultural, recreational and leisure services and events to encourage community interaction, enhance the health and social well being of the Town's residents and provide a sense of place and belonging.

The Community Services team provide service and support in the areas of:

- Children and Youth
- Recreation and Leisure
- Cultural Development
- Seniors, Disability Services and Crime Prevention

### Cultural Development

Cultural development is an integral part of Council's overall Community Development Strategy, primarily using arts and cultural activities that preserve and enhance the community's cultural heritage and history, diversity and local identity.

Throughout the year a number of projects and events are presented for the community. Regular events include the Medina Multicultural Ding Dong, the Kwinana Festival, K-Town Blues and Roots Concert and NAIDOC Week.

Examples of Kwinana's early history can be found at Sloan's and Smirk's Cottages, built in the early 1900's by the early settler George Sloan.

Christmas is celebrated on the beautiful lawns and gardens of Sloan's cottage and Walley's Walk through Sloan's Reserve provides an interesting environmental walk through wetlands areas of grasses and bushland. The Reserve is part of Bush Forever Site 349 and is a Conservation Category wetland.



# Kwinana



## Children and Youth

Our young residents are of special importance to the Town of Kwinana. Council is committed to providing a range of programs and services including early intervention programs, the Fun Van and Activity Trailer which operates during the summer months in various local parks and ovals, Short Fuse Theatre and Children's Week activities.

The Youth Incentive Program aims to recognise and support the positive contribution young people make to our community. Aimed at 10-14 year olds, it encourages them to achieve their goals in life and helps change the perception of young people within the Kwinana community.

Additional assistance is provided to the community through detached youth workers, school holiday programs and other activities and services.

## Sport and Recreation

The Town provides management and provision of sport and Recreation activities as well as providing support to local community sporting groups to achieve recreational pursuits catering for the needs of the growing community. The Town promotes opportunities for the creative use of leisure time for self expression and cultural enrichment to ensure the physical, mental and social well being of all residents.

There are numerous sport and Recreation clubs in the Town of Kwinana providing social pursuits, junior and senior sports, recreational activities and hobby groups.

The Town of Kwinana manages a number of reserves, ovals, halls and facilities to cater for recreation and leisure pursuits for the Town's residents. Many beautiful parks and reserves contain facilities such as paths, seats, playground equipment, basketball hoops and walking trails.

Planning for future sporting facilities is a high priority for the Town of Kwinana. Future plans include the Orelia Sport and Recreation Precinct and the construction of the Wellard Sporting Pavilion.



## Community, Recreation & Culture Services



### Kwinana Recquatic

Centrally located within the town centre, Kwinana Recquatic is a modern and lively recreation centre that boasts everything needed to help residents and visitors improve their fitness and lifestyle.

The Recquatic contains three separate swimming areas including a 25m pool, a heated leisure pool and a hydrotherapy pool. The wet area also contains a spa and sauna for those wishing to relax and rejuvenate after their workout.

The hydrotherapy pool is used by physiotherapy groups to aid with rehabilitation and is a popular choice for infant and toddler swimming lessons and visitors looking for gentler aquatic exercise.

Kwinana Recquatic also has a modern gym and cardio theatre with fully accredited and qualified staff, user-friendly equipment and a bright air-conditioned environment. The centre offers Group Fitness classes and Personal Training options.

With two full size courts, Kwinana Recquatic has a range of sports available such as indoor soccer, netball, badminton, basketball and volleyball.

A fully supervised creche is located within the centre so parents can leave their children in professional hands whilst they enjoy the facilities or a coffee from the cafe. A Vacation Care Program has also been introduced enabling the Centre to provide high quality care to up to 70 children during school holidays.

The Recquatic aims to engage the whole community and a number of innovative programs targeting seniors have been introduced and proved themselves to be very popular and well attended.

With a range of memberships and options available there really is something at the Recquatic for everyone.



# Kwinana

## Kwinana Community Arts Centre

One of Perth's best kept secrets, The Kwinana Community Arts Centre is a beautifully maintained and well-equipped resource with a versatile range of functions.

The Centre boasts three theatres including a 1000 seat amphitheatre, a 256 seat proscenium arch theatre which doubles as a cinema, and a 92 seat intimate theatre, as well as a dance studio, a number of multi-purpose studios and a courtyard which make it ideal for business functions, product releases, conferences and training programs.

The Arts Centre hosts a variety of events from theatre and music productions to singing and dance. The Dance Eisteddfods are hosted annually at the centre and hundreds of children from around the region come to participate in this hugely successful event.

The beautifully landscaped outdoor Kwinana Federation Amphitheatre is a popular spot for residents and visitors during the warmer months as it provides the perfect venue for families to relax with a picnic whilst enjoying one of the many shows or outdoor cinema events.

The cinema provides a regular run of movies, whilst the café and licensed bar is available for light meals and refreshments.

The Arts Centre is a truly unique facility for the Kwinana community and is located right in the heart of the civic precinct.



# Town of



## Kwinana Industrial Area



The Kwinana Industrial Area (KIA) has been in existence for over 50 years and continues to make a major contribution to the wealth of the state of Western Australia and its people.

The KIA has grown significantly since its inception in 1952 and represents a unique blend of connecting heavy, support and infrastructure industries, being one of the most interconnected industrial precincts in the world.

Kwinana industry:

- is a major source of revenue for the state and Australian economies with direct sales of \$8.51 billion per annum;
- has a total factor income (sum of wages, salaries and gross margin before tax or depreciation) of \$2,995 million;
- has an annual output worth \$15.77 billion; .. employ over 4,800 people, over 60% of whom live locally;
- also provides indirect employment to around 26,000 people;
- contributes a high degree of social benefit to employees and the local community;
- commits hundreds of millions of dollars to capital expenditure every year.

1.



2.

*This information has been kindly supplied by the Kwinana Industries Council.*

*For further information, please visit [www.kic.org.au](http://www.kic.org.au) or phone 08 9437 0162.*

1. Aerial view of the KIA  
(courtesy Kwinana Industries Council)
2. Cockburn Sound  
(courtesy Cockburn Sound Management Council)

# Kwinana



## Fremantle Ports Outer Harbour Project

Planning is now well underway to obtain approvals for proposed additional container and general cargo port facilities in Fremantle Port's Outer Harbour at Naval Base/ Kwinana.



The proposed facilities will handle the overflow trade when the Inner Harbour at Fremantle reaches capacity in about 10 years time. The Inner Harbour will then continue to operate at capacity. The State Government has committed to complete the first stage of the Outer Harbour container port facilities by 2015.

This proposed significant infrastructure (as pictured) will be of strategic importance to the State.

Fremantle Ports and the Department for Planning and Infrastructure are jointly leading the Fremantle Ports Outer Harbour Project, which builds on a long history of planning to ensure that facilities are developed in a timely way to meet future trade needs.

Both organisations are working with a number of other agencies, as well as local government (including Town of Kwinana) and community representatives.

The Fremantle Ports Outer Harbour project will strive to incorporate the vision and principles of the Western Australian State Sustainability Strategy into project assessment, planning and development.

The existing Outer Harbour is currently one of Australia's major bulk cargo ports, handling grain, petroleum, liquid petroleum gas, alumina, mineral sands, fertilisers, sulphur and other bulk commodities.

For an overview of the project, see [www.fremantleports.com.au](http://www.fremantleports.com.au)





# Town of

## Latitude 32

**Latitude 32 Industry Zone represents one of Australia's largest industrial developments, encompassing some 1,400 hectares.**

A visionary project, it highlights the Western Australian State Government's commitment to a large-scale development specifically designed to meet short, medium and long term market demand for industrial land in the Perth metropolitan region - while supporting economic growth.

The project - which is expected to generate up to 10,000 new jobs - looks to the long-term needs of business.

Strategically located in Perth's rapidly expanding south west corridor, Latitude 32 will become a key component of a new trade region in response to an exciting era of economic development.

Only 25 kms from the City of Perth, Latitude 32 is designed to provide direct links to:

- Perth CBD (via Kwinana Freeway and Southern Suburbs railway)
- Perth domestic airport (via Kwinana Freeway/Roe/Tonkin highways)
- Kewdale light industrial area and intermodal transport hub (via Roe/Tonkin highways and direct rail link)
- Canning Vale light industrial area (via Kwinana Freeway and direct rail link)
- Kewdale intermodal facility
- The planned new Fremantle Ports Outer Harbour
- Jandakot Airport.

Latitude 32 will integrate with the Kwinana Industrial Area, the Australian Marine Complex at Henderson, East Rockingham Industrial Park and the planned new Outer Harbour at Cockburn Sound to provide a regional hub for the continued growth of national and international trade for Western Australia.

Transport access and world-class infrastructure are vital to the operation of business at Latitude 32. Its prime location will provide access to high quality road/rail systems to local and international markets.

The proposed Outer Harbour will also feature integrated transport facilities providing further linkages to rail, road, air and sea infrastructure.

For business trading with overseas markets or relying on international supplies, the location of Latitude 32 is unrivalled.

For further information see [www.latitude32.com.au](http://www.latitude32.com.au)



# Kwinana

## The Final Word from the CEO



There is no doubt that the secret of Kwinana is now known and with this a new era has truly begun. A sense of excitement is emerging within the district that is shared by Council, staff, stakeholders and the community.

Within the pages of this profile you will see the projects and initiatives that will help shape the new Kwinana and ensure a successful future for everyone here.

When areas are developing there are many facets that are required to ensure they are successful and sustainable. The developments in Kwinana over the next 10 years will provide the very corner stones of a sustainable community. These include state-of-the-art education, health, transport, sporting, retail and entertainment facilities, an increasing range of affordable housing options and tens of thousands of jobs. This is an enviable situation for any local government area and almost unique in Western Australia.

The fortunate position that Kwinana finds itself in is no accident but the result of highly effective collaboration between a forward-thinking Council and a range of key partners from both private and government sectors. The Town of Kwinana also benefits from associations with a range of stakeholder groups, many of whom are members of the Progress Kwinana Taskforce, a group of principal stakeholders representing the private sector and the State Government, all of whom share a common interest in Kwinana and a strong belief in its future.

The State Government-led Rockingham Kwinana Development Office (RKDO), represented by the Town of

Kwinana, City of Rockingham, LandCorp and the Department for Planning and Infrastructure (DPI), maintains a focus on projects that require a State Government presence in the South West Corridor. Kwinana's affiliation with this Office, previously known as the Rockingham Development Office, was formally recognised in December 2006 and it is already clear that this will be a fruitful relationship.

The Southwest Group is a collaboration of six local government areas - Rockingham, Cockburn, Fremantle, East Fremantle, Melville and ourselves. This voluntary council works to ensure cooperation and maximise business and resource sharing opportunities in the region.

In addition, several stakeholders are working directly with the Council toward the realisation of this community's vision, these include: LandCorp; Kwinana Industries Council; Peet Limited; Satterley Property Group; Mirvac and Brocklebank Pty Ltd.

The future is an exciting and challenging time for anyone involved with the Town of Kwinana. As our new marketing campaign correctly refers to - it is certainly a time for **Looking Forward**.

Neil Hartley  
Chief Executive Officer



# Kwinana

*...Looking forward*



TOWN OF  
**kwinana**

Town of Kwinana  
Cnr Gilmore and Sulphur Road, Kwinana WA 6167  
PO Box 21, Kwinana WA 6966  
Tel: (08) 9439 0200 Fax: (08) 9439 0222  
TTY: (08) 9419 7513  
admin@kwinana.wa.gov.au  
www.kwinana.wa.gov.au

*Any representation, statement, opinion or advice expressed in this publication is made in good faith and on the basis that the Town of Kwinana, its employees and agents are not liable for any damage or loss whatsoever that may occur as a result of action taken in respect of anything contained in this document. Professional advice should be obtained before applying the information contained in this document to particular circumstances.*