

REGIONAL ACCESS TO SERVICES

The South West Group seeks to improve the quality, range and ease of access to services in the South West Corridor.

This can be through budget submissions, advocacy and direct support of projects.

A current project is seeking to have a Medicare office established at Cockburn Central and examining sites for Medicare Access Points at other locations within the region.

The South West Group and the City of Cockburn have lodged a submission with Medicare Australia for the establishment of a Medicare Office at Cockburn Central in the South West Corridor of Metropolitan Perth.

Cockburn Central is a logical location for the delivery of regional services to cater for the rapidly expanding population as it is almost equidistant from the major regional centres of Fremantle, Rockingham, Armadale and Perth.

By 2020 there will be an estimated population of 122,500 within 5 kilometres and 195,000 within 10 kilometres of Cockburn Central. There are 35,000 people already living within 4 kilometres of Cockburn Central.

Cockburn Central is located on the Kwinana Freeway and is serviced by the new Southern Suburbs Railway. Already 3.5 million shoppers a year use the Gateway Shopping Centre at Cockburn Central. The average weekday traffic on the adjoining Kwinana Freeway at Cockburn Central is 76,300 vehicles per day.

Location of existing Medicare Offices and impacts from a new Office

Medicare Offices are located at Armadale (14.79 km distant to the East), Fremantle (13.92 km distant to the North West), Booragoon (10.90 km distant to the North) and Rockingham (27.2 km distant to the South West). The Booragoon Medicare Office located in the Garden City Shopping Centre is under pressure to meet service targets. It is expected that a new Medicare Office at Cockburn Central would reduce demand on the Booragoon Office by capturing the significant growth from the region around Cockburn Central.

Location of Medicare Australia Access Points

The Medicare web site identifies Access Points at Maddington (14.37 km distant to the North East) and Victoria Park which is 20.0 km away.

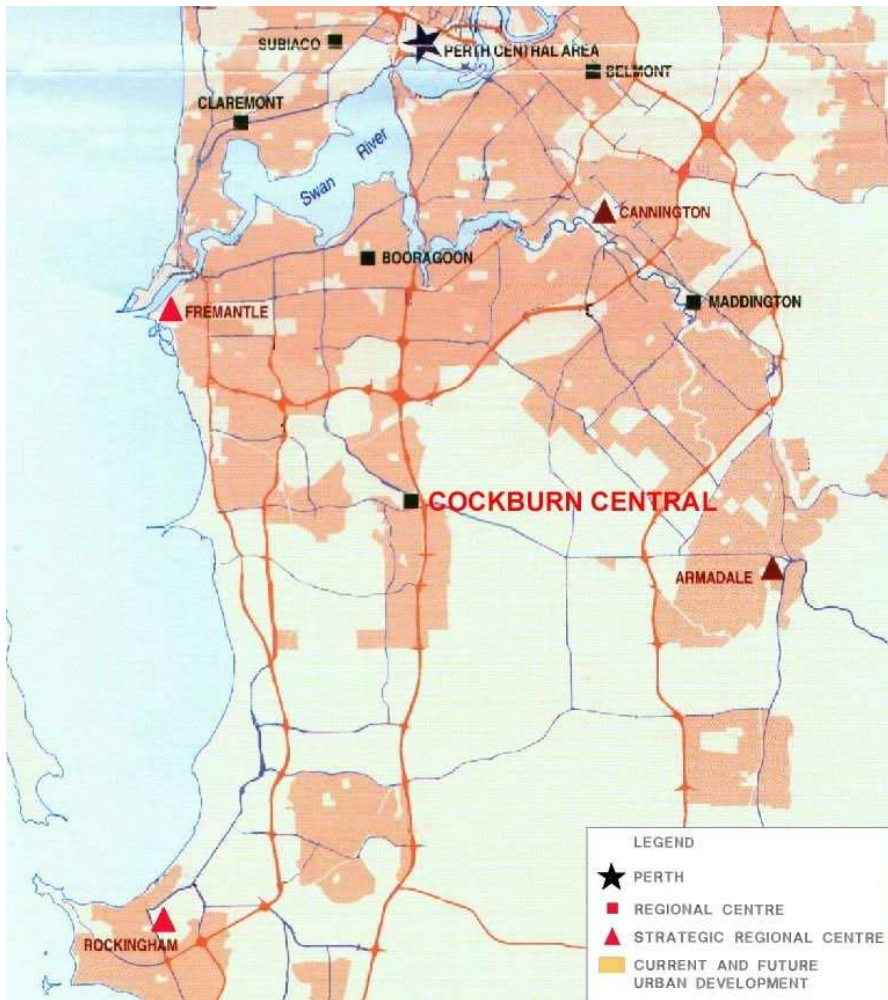


Figure 1: Location of Cockburn Central

In March 2008, Centrelink called for tenders to lease 1,250 square metres of ground floor office space at Cockburn Central. If Medicare is to collocate with Centrelink an early decision will be required to provide for a variation to the tender.

The City of Cockburn holds 10,000 square metres of land in fee simple adjoining the Gateway Shopping Centre and are working to establish an Integrated Primary Health Centre on the site. An early decision to establish a Medicare Office collocated with a Centrelink Office as part of this complex will reduce establishment and operating costs.